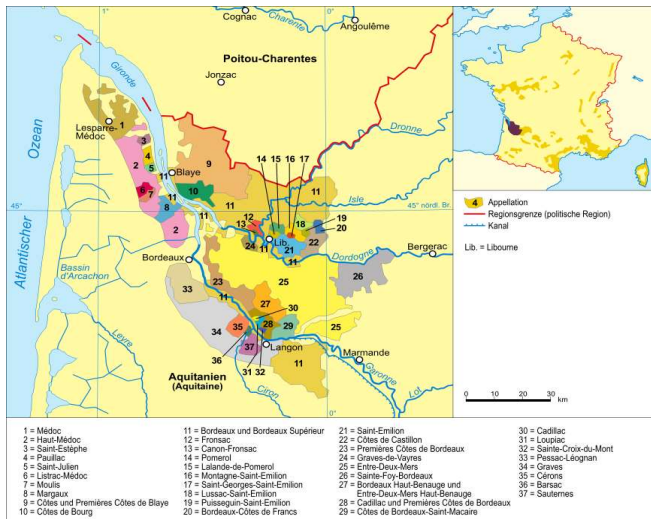


## Famous Blended Wines, with "Typical" Blend components, By Rob Fowler



**Northern Cote du Rhone, Con't.** Many accessory grape varieties are permitted but cant be more than 30% of blend. Examples include Cinsault, Carignane, Counoise, and whites ( $\leq 5\%$ ): Viognier, Marsanne, Roussanne.

### Red Cote du Rhone (Fr); Southern

|           |               |
|-----------|---------------|
| Grenache  | Main, Min 40% |
| Syrah     | Supplement    |
| Mourvedre | Supplement    |

Syrah and Mourvedre must make up at least 15%; and accessory varieties no more than 30%; whites  $\leq 5\%$ .

Villages and higher AOC must be  $\geq 50\%$  Grenache

### Red Chianti Classico DOCG (It); as of 2006

|                |                  |
|----------------|------------------|
| Sangiovese     | Min. 70%         |
| Canaiolo       | No more than 10% |
| Permitted reds | No more than 20% |

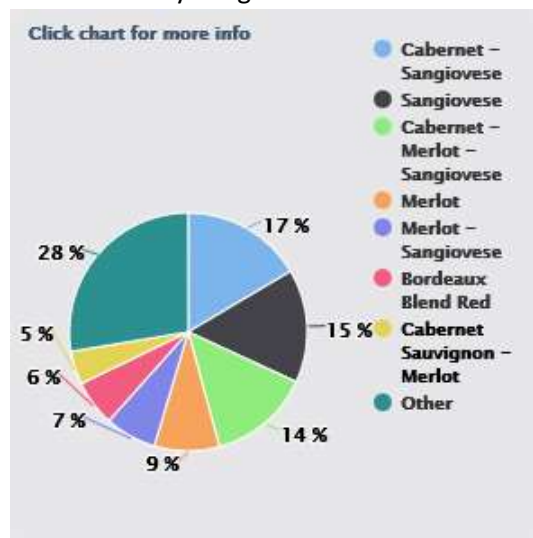
Historically permitted (at one point required) grapes were white grapes of Trebbiano and Malvasia, but outlawed since 2006. Now permitted reds include Cab Sav; Merlot, Syrah, Colorino, etc.

### Red Vino Nobile DOCG (It)

Similar to Chianti except permitted reds are local only

### Red "Super Tuscan" (It); Toscana IGT

Wide open for blending!  
Mostly Sangiovese blended with... ?



### Red Bordeaux (Fr); Right Bank

|                    |             |
|--------------------|-------------|
| Merlot             | 70%         |
| Cabernet Franc     | 15% or more |
| Cabernet Sauvignon | 15% or less |

### Red Bordeaux (Fr); Left Bank

|                    |     |
|--------------------|-----|
| Cabernet Sauvignon | 70% |
| Merlot             | 15% |
| Cabernet Franc     | 15% |

### Red Bordeaux Permitted grapes: Cabernet

Sauvignon, Merlot, Cabernet Franc, Malbec, Petite Verdot, Carmenere

### White Bordeaux (Fr); Bordeaux Blanc

|                     |               |
|---------------------|---------------|
| Sauvignon Blanc     | more than 50% |
| Semillon            | less than 50% |
| Muscadelle & others | less than 10% |

by law Semillon & Sauvignon Blanc must be  $\geq 70\%$

### White Bordeaux (Fr); Sauternes (sweet)

|                 |       |
|-----------------|-------|
| Semillon        | 80%   |
| Sauvignon Blanc | 20%   |
| Muscadelle      | Trace |

### Red Cote du Rhone (Fr); Northern

|           |            |
|-----------|------------|
| Syrah     | Dominant   |
| Grenache  | Supplement |
| Mourvedre | Supplement |